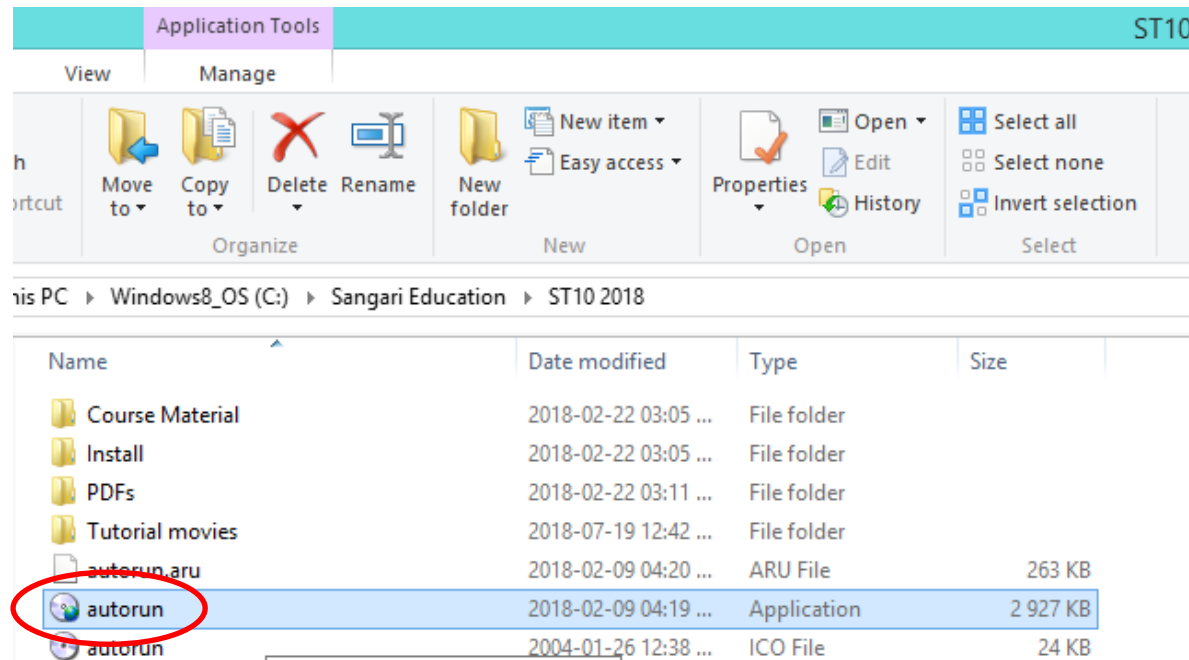


## How to install Solid Edge ST10

**Step 1:** Insert the F1 in schools 2018 Disc 1- ST10 Install into the DVD rom.

In the case that you don't have a DVD rom, you should copy the whole disc onto a flash and then onto your computer/laptop.

Once copied onto your computer onto the C-drive, open the **Folder** and look for this icon.



**Double click on the Icon.**

Step 2: When this screen appears, **Click ONCE** on the “Install Solid Edge ST10 Button”. **ONLY CLICK ONCE**, otherwise it will try to install the software multiple times.



Once you have successfully installed ST10, use the videos and the PDF guides to help you master the Software.

If you have trouble watching the videos, install VLC to solve the problem. You can also visit Sangari's website for more information.

**Install Solid Edge ST10**

**Install VLC if Required**

**Go To Sangari Website**

**EXIT**

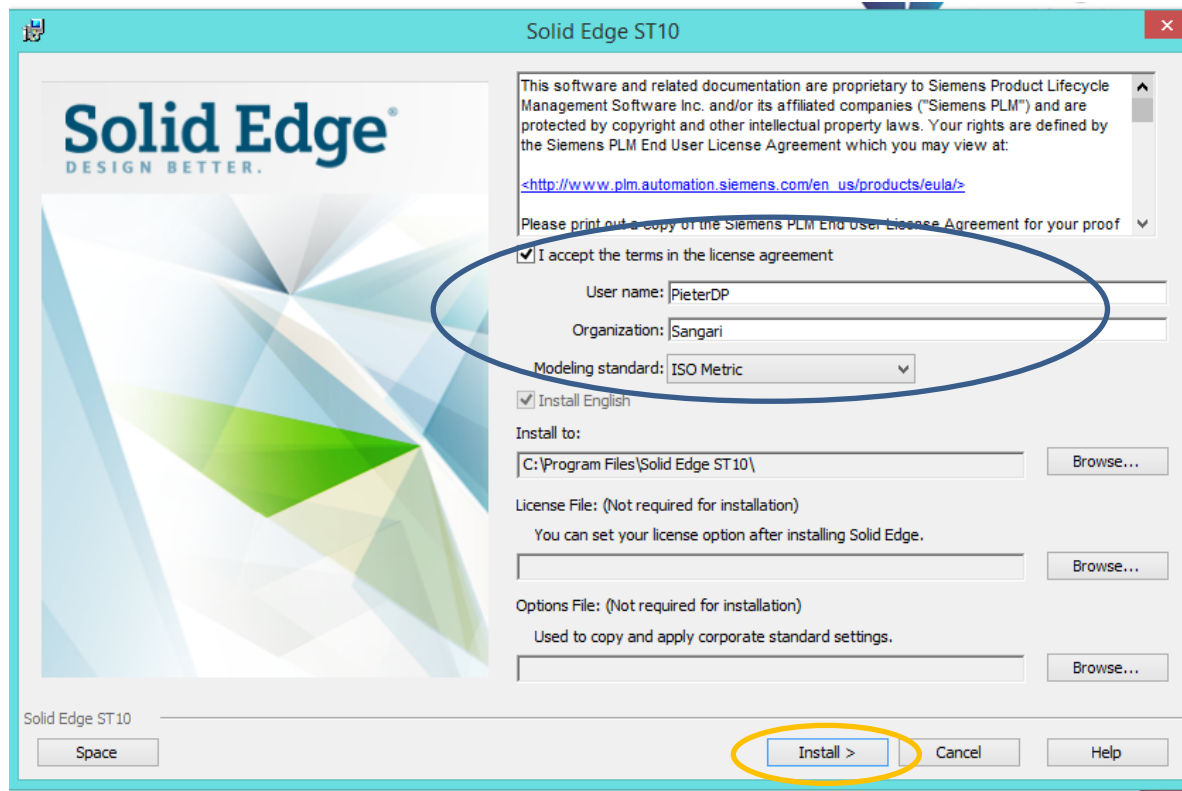
**Videos**

**F1 in Schools Block**

**ST 10 sketching guide**   **ST 10 Base Features guide**   **ST 10 Course material**

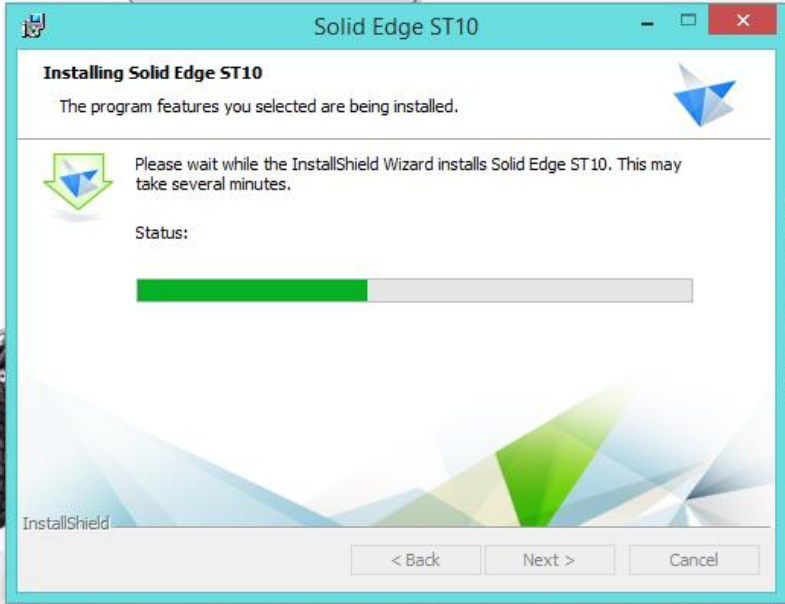
**Step 3:** You will need to allow the software to make changes to your computer. After that you will see the screen below.

- Click the **Accept** terms and condition
- Complete the Username area **using your name**.
- Type in **your School name** at Organization.
- Select the **ISO Metric** modelling standard.



After completing the above fields, click on the Install button at the bottom.

Step 4: The software will now install and give a screen like below. **Wait for it to finish.**



Once you have successfully installed ST10, use the videos and the PDF guides to help you master the Software.

**Videos**

**F1 in Schools Block**

**Solid Edge.**  
Design better.

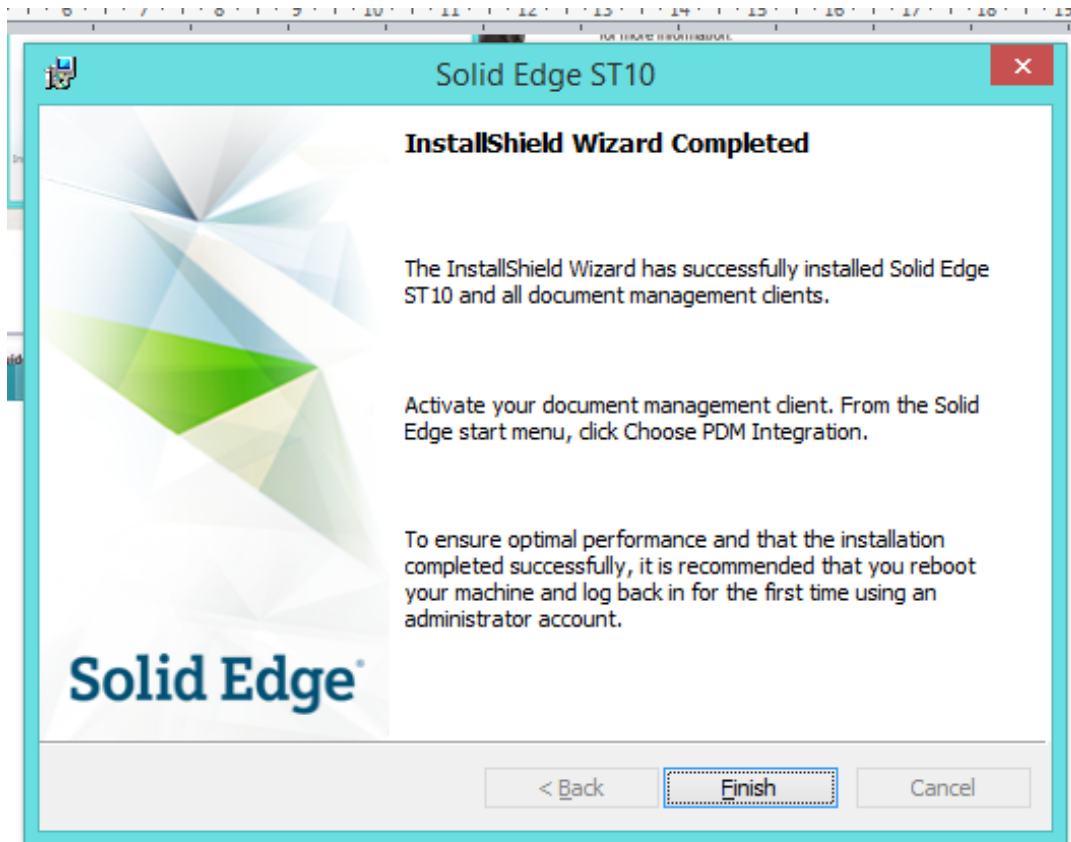
If you have trouble watching the videos, install VLC to solve the problem. You can also visit Sangari's website for more information.

**Install VLC if Required**

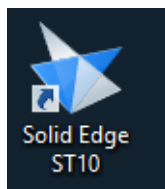
**Go To Sangari Website**

**EXIT**

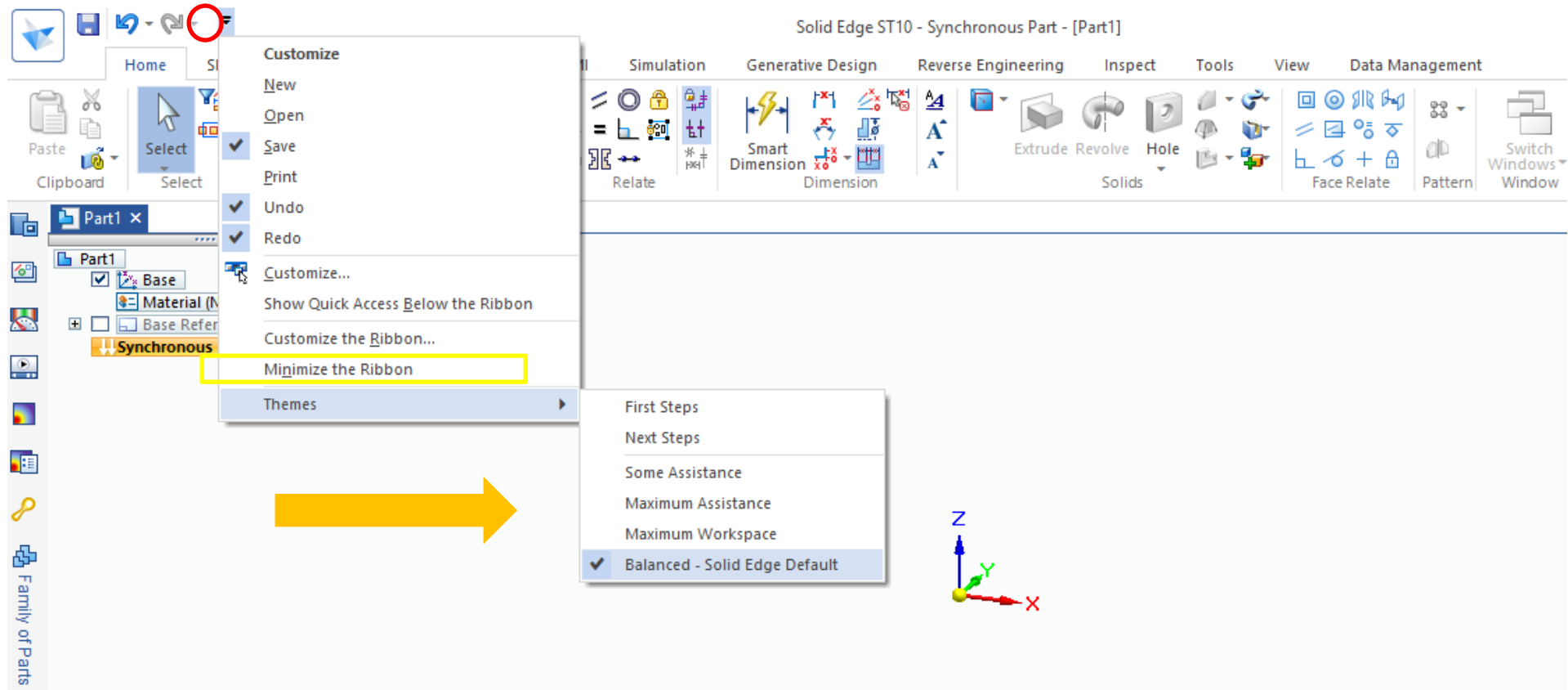
**Step 5:** Once it has finished installing, it will give a screen as below. Click on finish and then you are done.



**Step 6:** Now you will see the Solid Edge icon on your desktop, Double click to open the software.

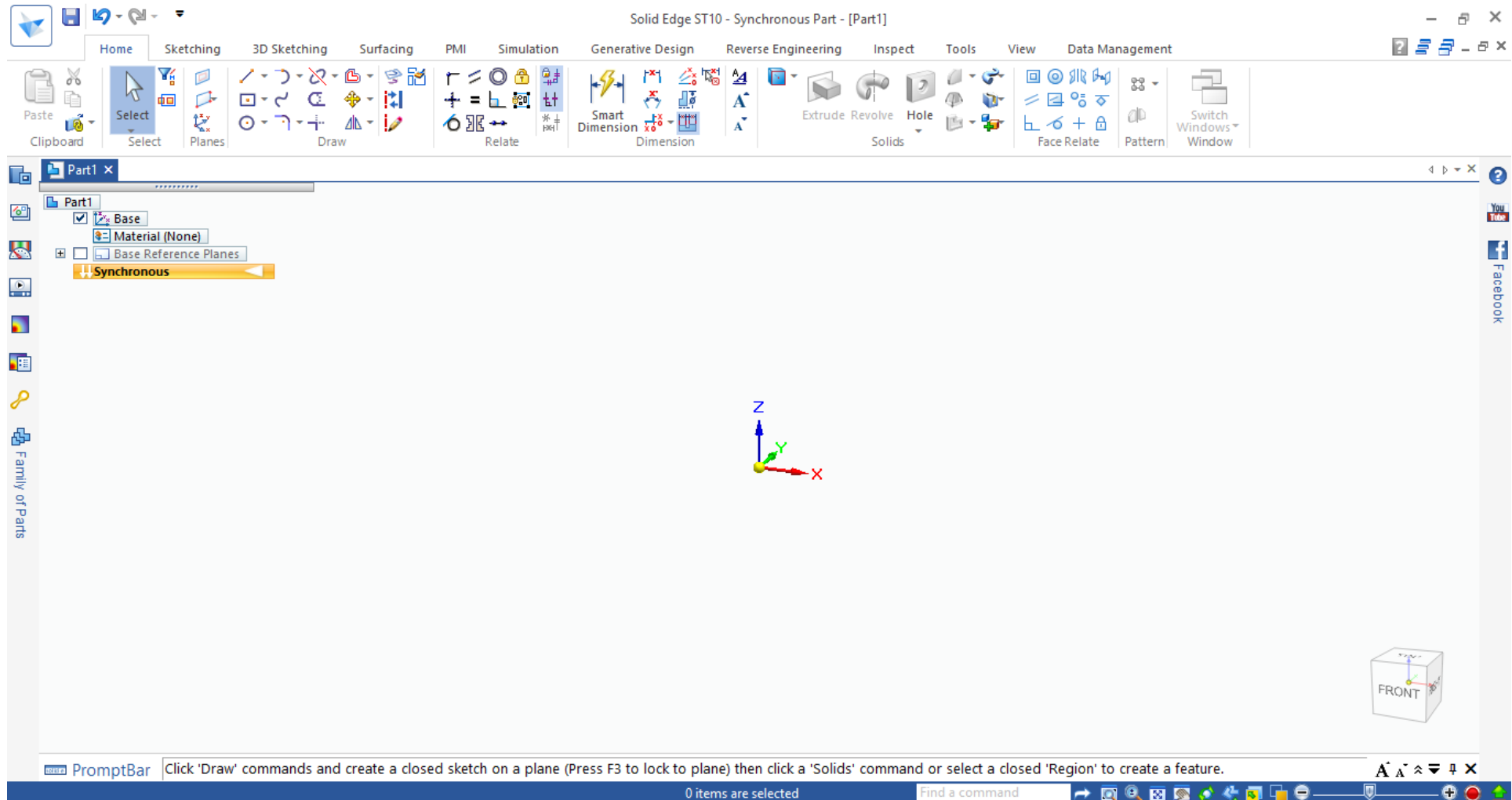


Step 7: With the first install you will need to select your theme. The theme you need to use is **THE BALANCED** theme.



If you selected the wrong theme, follow these steps

1. Click on the drop down menu in the red circle.
2. Click on the Themes tab at the bottom in yellow.
3. Click on the **BALANCED** (orange arrow) theme at the bottom and your set.
4. Once this is done your tools should look the screen below.



**This is what the standard screen should look like when you start. You are now ready to use the tutorials to design your miniature F1 car.**

You can find the tutorials and F1 block on this screen below.



Main

THE FORMULA 1<sup>™</sup> STEM CHALLENGE  
IN SCHOOLS

ESTEQ

Install Solid Edge ST10

Once you have successfully installed ST10, use the videos and the PDF guides to help you master the Software.

Videos

Solid Edge.  
Design better.

Install VLC if Required

Go To Sangari Website

EXIT

ST 10 sketching guide

ST 10 Base Features guide

ST 10 Course material

Use the video's from the drop down menu along with the F1 in Schools Block to make your car.